

**Bradcot Awnings are available in a total of fourteen different sizes, and one height, to fit most recent makes of caravan.**

To determine the correct size for your caravan, measure ground to ground from a point vertically below the awning channel at one end, around the channel of the caravan, to a point vertically below the awning channel at the other end (in cm from A to B as shown in the illustration). The caravan should be on level ground & normally loaded when this measurement is obtained.



A-B Length	Awning Size
706-735	720
736-765	750
766-795	780
796-825	810
826-855	840
856-885	870
886-908	900
909-923	915
924-938	930
939-953	945
954-968	960
969-983	975
984-998	990
999-1013	1005
1014-1028	1020
1029-1043	1035
1044-1065	1050
1066-1095	1080
1096-1125	1110



Heyford Court, Hillam Road, Bradford BD2 1QN Tel: 01274 306811 Fax: 01274 390951  
 email: [info@bradcot-awnings.co.uk](mailto:info@bradcot-awnings.co.uk) website: [www.bradcot-awnings.co.uk](http://www.bradcot-awnings.co.uk)

Bradcot reserve the right to make changes in line with technical progress. Technical details, materials colours and dimensions are correct at time of going to press. Our thanks to Michael Jordan Caravans of Gomshall, Surrey and Dickinson's Caravans of Bradford, West Yorkshire for the loan of Caravans and a special thanks to Maustin Caravan Park, Kearsby, North Yorkshire for their hospitality and venue.



# Welcome

Make more of your caravan. This year Bradcot presents a range of awnings that add extra space, extra grace, added value and more features than ever before.

We understand caravans and caravaneers and, thanks to our design expertise, we've made sure that the Bradcot awning YOU choose will be exactly right for your need.

But we feel it's time that we told you why a Bradcot is considerably better than some other awnings, particularly those that are being made in the Far East. Please take the time to look at the superior ingredients that go to make the **Bradcot superior awning**. If you are serious about your holiday then you'll want to take your awning choice seriously, please read on....

## Concept Pages 8-9

### Style

This new contemporary design compliments an already successful range and is available in a stunning new colour way.

## Residencia Pages 10-11

### Customise

The ultimate Residencia: all the style and long-term resilience needed when your caravan is On-Site for the season. In super weather resistant PVA-finish fabrics. Weather-tight, washable, secure.

## Classic Pages 12-13

### Explore

Famous Classic - the market leader with our toughest roof material and 'breathable' side walls. Easy to erect: panels just zip together. No wonder it's such a favourite!

## Active Pages 14-15

### Innovate

Super Active - so versatile! Sensible five-piece design makes this range an easy winner for get-up-and-go families. Six door accessibility. Erected and dismantled in a jiffy.

## Sport Pages 16-17

### Grow

Spacy Sport - such good value! Big picture windows on all sides plus one detachable side panel to allow an Annexe to be fitted with ease. Family, friends, everyone's welcome.

## Atrium Pages 18-19

### Conservatory

A unique porch awning that offers a radical design alternative for those on the move. Packed to the gunnels with Bradcot's great British excellence.

## Portico Pages 20-21

### Keep moving

Lightweight Portico, Portico+ or Portico XL adds extra space in an instant. The ideal short-stay companion. Panoramic window. Up to 2.4 x 3.3m of useful shelter that packs away perfectly.

## Annexe Page 22

### Extend

Instant Annexe, Annexe+ or Annexe 580+: this is the answer to extend your awning and make it even larger, or as an 'extra room', with extra privacy for very little extra cost.



## Take a closer look at a Bradcot awning...

### Between a rock and a hard place?

### Zipped up quality

### As Easy as 1, 2, 3...

### Taking the heat out of buying an awning

### A British concept & design

### Hi-Tech fabrics - Your quality guarantee



Ever struggled with uneven and rocky ground when pegging out your awning? Ever wished you could move your pegging strap just that bit further to the right (or left)? Well now you can! All Bradcot awnings feature moveable pegging systems.

All Bradcot awnings feature Military specification YKK Zips! Bradcot choose YKK because only the best will do. So; would you prefer to sweat and cuss over a cheap zip that breaks on your holiday or rely on a smooth accurate fastener that is trouble-free and guarantees more time to relax?

Only Bradcot awnings come with the unique German-engineered Easy System alloy awning frame. Just three parts to this frame! Each one a breeze to handle. Erect your Bradcot frame in less than 5 minutes ....Now doesn't that make sense!

We all want nice weather on our holiday, but do we really enjoy all that extra heat in the awning? Bradcot awnings feature a unique heat-reflective roof that reduces awning temperature and improves holiday comfort, ...night and day!

ALL Bradcot awnings are designed and cut in Britain. Each and every awning undertakes a rigorous quality-approval process thereby guaranteeing that your holiday will not be spoilt by inferior workmanship and cheap materials.

Once again, there are no short corners cut when it comes to awning materials. Your Bradcot is made to last a lifetime of holidays and that's why we use only Ten Cate & Solution Dyed Acrylics. These superior materials are fade and rip resistant and represents the ultimate in awning fabrics.

# The Aluminium Easy System

Bradcot's Easy Aluminium System Frame is the ultimate in frame technology - offering simplicity, style and strength in a lightweight frame that is virtually maintenance free.

**Easy System.  
It won't leave  
you scratching  
your head!**

It's quite simple! Bradcot's Easy Aluminium System Frame offers rapid awning erection without the usual stress and aggravation that can be experienced with some traditional frames.

Clip in the Hooks, Feet & Hinge Covers into the pre-assembled frame sections and you're ready to go. Weather permitting, this frame really does take only minutes to erect. (Hinge covers not required on Portico, Portico Plus & Atrium models)

The lightweight 'telescopic' pole section glides smoothly out to the position required. It's at this point that the frame shows just how clever it actually is. Once the pole section has been 'equally' extended to give the optimum tension, you simply let go of the poles to enable the adjuster to 'self lock'. No longer is a third hand required to tighten up a thumbscrew and no more sore thumbs!

**As Easy as 1, 2, 3...** “Designed and manufactured in Germany, this piece of ergonomic brilliance has revolutionised the way we erect awnings and what's more, it's exclusive to Bradcot Awnings.”



**The Unique Bradcot  
Easy System Awning frame....  
Just 3 parts,  
erected in under five minutes!**



**No awkward  
tension screws!**

**To adjust the poles, simply  
stretch and let go:**

a simple do-it-yourself task, with no fiddly buttons or screws. Dismantling is just as easy: simply depress the slide to release tension, and the poles back down within each other, ready to clean and pack away for the next outing.

The image above shows the 3 sections of frame found in a Size 1 Easy System Frame. All full awning frames have 3 main sections as shown and for awnings 900cm and up, 2 extra roof bracers and 2 extra legs are included for additional support (these additional support poles are clamped to the main frame once the awning has been fully erected and pegged).

# Materials

**Rain...wind...sunshine...no worries!**

**You will NOT find cheap Chinese fabrics in a Bradcot! Only the highest quality European materials are selected then hand-sewn into your awning.**

6

**Ripstop Wall Cloths**  
(Residencia only)



**Wine**

Wall Cloths

Curtains

Curtains

**Green**



Curtains

Splashwalls

Wall Cloths

**Ripstop Wall Cloths**  
(Residencia only)

Splashwalls

**'Concept' model only**

Wall Cloths

Curtains

**Blue**

Splashwalls

**Ripstop Wall Cloths**  
(Residencia only)

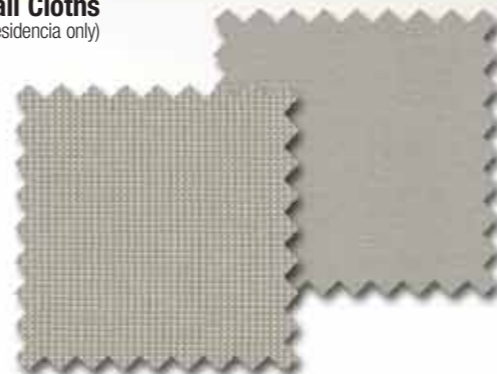
**Ripstop Wall Cloths**  
(Residencia only)

Wall Cloths

Splashwalls

Wall Cloths

Wall Cloths



## Peace of mind

### Shut out the elements...

Wind and weather is shut out in the most effective way possible. All awnings carry a piping fitment which is threaded into the caravan's channelling, to provide a weather tight seal.

### A cosy environment...

Awning roofs add further peace of mind. These are in **one-piece heat reflective** coated polyester.

No seams are needed (except Classic+), which naturally means "no leaks"! Draughts are kept out too, thanks to the sculptured PVC skirts.

### & hard wearing...

This year ALL awnings are manufactured in acrylic: hard-wearing, not too heavy, and fade resistant. The exception is the new Residencia, whose wall fabric is in a PVA coated spun polyester/pva mix.



## Stay Cool...

All Bradcot awnings feature our unique heat-reflective roof! Providing greater comfort in the hot summer months.

## Alloy Curtain Rods

All Bradcot curtains are fitted onto unique Alloy curtain rods.

## Colours that stay true

### The highest quality...

Naturally, you will be proud of your Bradcot awning investment. It's worth knowing that whichever awning you choose will start looking good and stay looking good, retaining its Top Quality appearance.

### Your guarantee of excellence...

So confident are we about the fact that the acrylic fabric side walls of our "Acrylic Awning Range" will not

markedly fade for up to 10 years, our "Fade-Resist" promise, we **GUARANTEE** it.

### Only the best...

To appreciate why we offer such a rock-solid warranty, it is worth looking into the dyeing process of acrylic fabrics and understanding that Bradcot could take a cheaper route but prefer to give you - our customer - materials that we can stake our reputation on.

7

# Concept

8



This new contemporary design complements an already successful range and is now offered in this new colour way.



9

The Concept is the latest addition to Bradcot's awning range for the 2010 season. This beautifully styled awning offers a contemporary feel in both design and colour. Produced from the finest 'Solution Dyed' Acrylics, this awning boasts all the features of our ever popular Active model and is offered in this exciting new colour combination. The Concept has a projection of 2.40mtrs (8ft) and all four panels can be completely removed, or lowered halfway to give you an open aspect to all 3 sides, (optional verandah bars are required to achieve this). The Concept comes complete with one full, ventilated side mesh window, which can be used in either side. In addition to this there are mesh strips found above each front and side windows offering greater ventilation and reducing the build-up of condensation that can be experienced at certain times of the day. To help you stay even cooler in the hottest of climates, the Concept's unique 'Pearl' effect roof offers heat reflective properties offering you greater levels of comfort.

**OPTIONS INCLUDE:** Easy System Aluminium or Glass Fibre frame. Both 520 standard & 520+ tall Annexes will fit either side. (Original side panel can be rotated and zipped back into the Annexe opening.)



Adjustable Pegging



YKK Zips



Easy System Option



Heat Reflective Roof



A British Concept & Design



10 Year Anti-fade Guarantee

**A voluminous, state-of-the-art awning offering great flexibility and ultra reliability.**

Concept is packed with all the usual Bradcot features and is super-tough from the top downwards.



# Residencia



If you are one of those lucky people who have found a prime site that's too good to leave, the Residencia awning could have been made for you!



The Residencia - packed with features, strong, secure, and designed to be confidently left unattended for long periods. Whilst other awnings in the range are ideal for people on the move, the Residencia introduced new fabrics, new frames and new fastenings with heavy-duty, long term residence in mind. **This is the only awning in our range recommended for this application.**

Walls are in a PVA coated spun polyester/pva mixture incorporating heavy polyester "Rip-Stop" mesh. Apart from super strength, this provides moisture absorbent qualities and consequently, greatly reduced condensation risk. An added bonus is that this fabric can be vigorously cleaned whenever required. The roof, in silver heat-reflective fabric, is perfect for keeping the heat out on the hottest of days.

And the same super-toughness is applied to the frame: a much heavier steel construction of 28/25mm diameter with double adjusters. The removable panels, sides and fronts of the Residencia enjoy all the flexibility of a first class awning, just as you'd expect with Bradcot. But with enhanced security in mind, a unique pegging system has been introduced, incorporating the familiar 'ladder' pegging medium. Twice the normal number of movable, replaceable clips are provided with each awning, with the appropriate number of ladders. Additional nylon webbing style storm straps are also supplied as standard, and fit directly to the frame, not the canvas.

Of course, although the Residencia is designed as a long-stay awning, it can be taken on tour. In this case, our aluminium 'Easy-System' should be ordered as an addition extra. It should not be regarded as a long-term frame, however, for this particular model. Available in soft green and grey, soft wine and grey, or true-blue and grey.



Adjustable Pegging



YKK Zips



Heat Reflective Roof



A British Concept & Design



Secure Double Adjusters

**If you're 'on site' for a season, there isn't a better awning to add to your enjoyment.**

This sturdy semi-permanent model, in high-strength fabrics, is a top-of-the-range investment.



# Classic

# Classic+

12



Many have tried to match the Bradcot Classic. But as caravanners keep telling us, this is a world beater: a classic in every way that's packed with features. It is an awning that is truly super-tough from the top downwards.



13

The roof is in Ten Cate coated polyester - our strongest, whilst the acrylic sidewalls are purposely uncoated to allow the fabric to breathe. This means greater comfort for everyone. And where some awnings may show their age after a few seasons, the Classic has the stamp of quality that's accorded to every awning in this 2010 acrylic collection, our 3 year manufacturers guarantee.

Interior size is generous. Projection is approx 2.5 metre, and just take a look at its all-round adaptability. Each side panel has two doorways, either side of a window. Front panels are detachable, ready to open up to the sunshine or, can create an attractive verandah effect. And if you seek extra space, the optional Annexe can be fitted to either side of the awning. Good ventilation is assured, with fully ventilated side mesh windows. A zipped vent is also incorporated on the top of the front panel. Spacious and stylish though it is, this is a remarkably easy awning to handle. Its five piece design is simple to erect and dismantle. Finally, consider the colour choice: wine and light grey, green and light grey or blue and light grey.

Bradcot's Classic+ takes the highly refined Bradcot Classic and delivers greater volume and features as follows:

- Classic+ has a projection of 3.0mtrs. (10ft).
- Standard Classic awning front with increased width of both the side panels.
- Two fully ventilated side mesh panels remain in this awning.
- A 580 Annexe+ has been specially designed to fit this awning on either side if required and has a massive floor area of 1.50mtrs. by 2.70mtrs.
- Mesh vents situated above the front windows, which are cleverly concealed behind the large coloured strips of acrylic above the front windows.

**OPTIONS INCLUDE:**

Aluminium Easy System frame or glass fibre, an Annexe or Annexe+, and a Patio (universal fitting) on sizes 720, 810, 870 and 930cm.



Adjustable Pegging



YKK Zips



Easy System Option



Heat Reflective Roof



A British Concept & Design



10 Year Anti-fade Guarantee

**Annexe 580+**  
The Annexe 580+ is designed specifically for the Classic+. See page 22 for more details.

**For years, our fleet leader - and no wonder!**

Super-strength roof, space unlimited, and so versatile. Just see how easily it adapts to your lifestyle.



# Active



Arrive on site and you won't waste a minute in setting up your new Active awning. This spacious, stylish 'second room' is deceptively easy to erect and dismantle, thanks to its sensible five-piece design.



14

15

The roof is in one complete section and both the front panels and side panels are detachable. Those two panoramic front windows give a grandstand view of your surroundings. And if it's a glorious day, just release the centre zip and remove the two front halves to create an inviting sun lounge. Two doors on each of the side panels, offer still further possibilities. The Active's space can be extended still further by adding an Annexe to either side, to serve many options: playroom, bedroom, whatever you wish.

Projection from your caravan is approx. 2.5m ("nearly eight feet" some will say); integral ventilation mesh in one side window and a zipped vent to the top front panel add to comfort levels. Colours are exactly to your taste: wine and light grey, green and light grey or blue and light grey, all with 'Fade-Resist' 10 year side wall guarantee, of course. When it's time to move on - no worries. Quickly dismantled, easily stowed, and you're away!

**OPTIONS INCLUDE:** 'Easy System' aluminium, or glass fibre frame, Annexe and Patio (universal fitting) on sizes 720, 810, 870 and 930cm.



Adjustable Pegging



YKK Zips



Easy System Option



Heat Reflective Roof



A British Concept & Design



10 Year Anti-fade Guarantee

**Lock out the weather or open up to the sun - section by section.**

The five-piece design and fine acrylic finish of the Active makes it one of the most versatile awnings you'll find.



**BRADCOT**  
AWNING RANGE

# Sport

16



Here's a sun-room in every sense of the word! Those big panoramic windows on all three sides of the Sport make it one of the brightest, most welcoming awnings in the Bradcot collection.



17

Lightness too is a great advantage, with acrylic sides - guaranteed 'Fade-Resist' for 10 years - plus a one-piece coated polyester roof. Setting up...taking down...easier than you'd ever imagine. The detachable side panel includes a full size doorway and large window. If extra space is needed, this can be detached and a Bradcot Annexe added. Front panels can also be removed entirely. And with full sized doorways on either side of the picture windows, the possibilities are limitless: open it up, partially or completely, as a sun-seeking verandah, or close it to make a windproof, weather tight hideaway.

Three attractive colour schemes are offered: wine and light grey, green and light grey or blue and light grey.

A steel frame is supplied as standard with the Sport.

**OPTIONS INCLUDE:** A 340 standard Annexe, and a Patio (universal fitting) on sizes 720, 810, 870 and 930cm.



Adjustable Pegging



YKK Zips



Heat Reflective Roof



A British Concept & Design



10 Year Anti-fade Guarantee

**For value-seekers, few can beat the Sport.**

Now manufactured in easy-to-handle acrylic, the first choice in awnings for caravan people who need freedom and mobility



# Atrium

18



**5-Star panaché and individuality in an instant! – An exclusive and extraordinary porch awning for those on the move.**



19

This unique contemporary-styled awning delivers the highest quality, style and practicality and represents a radical departure from the traditional caravan awning design concept. Atrium is designed for people on the move who want that extra add-on space in an instant.

As you would imagine, our newest awning delivers the famous Bradcot promise of great British excellence and attention to detail! The Atrium porch awning is packed with individuality, quality features, materials and construction methods all dedicated to your outstanding holiday experience. To underpin this commitment to quality Bradcot offer the Atrium awning with a 4 sectioned Easy Alloy Frame as standard!

Bradcot owners take their caravan experience extremely seriously. Only the best will do! Consequently, this ultra-durable porch awning is packed with quality features that deliver outstanding performance and comfort.

The Atrium is basically a five-sided porch awning, which is available in 3.5 and 4.5mtr sizes. Both models offer the same projection to the front of 2.40mtrs. The Atrium 3.5 has an internal width at the back of 3.5mtrs. and requires a flat awning rail length of 4.1mtrs to allow for the canopy overhang on each side. The Atrium 4.5 has an internal width at the back of 4.5mtrs and requires a flat awning rail length of 5.1mtrs; which also canopy overhang.

The Atrium offers total flexibility. Atrium's five panels feature interchangeable zips and can be consequently swapped-around with ease. Three of the panels feature clear windows, while the remaining two back side panels, (as shown in picture) both have a doorway each and tall ventilated mesh window.

The Atrium porch awning features mesh vents situated above the front windows, which are cleverly concealed behind the coloured strips of acrylic above each window.

The Atrium offers a design alternative for those who might traditionally choose a Bradcot Portico porch-awning product. As you would imagine, The Atrium is constructed with finest materials including our strongest heat-reflective roof, acrylic side-walls and 10 year fade-resistant guarantee.



-   
**Adjustable Pegging**
-   
**YKK Zips**
-   
**Easy System**
-   
**Heat Reflective Roof**
-   
**A British Concept & Design**
-   
**10 Year Anti-fade Guarantee**

The Atrium is available in wine, light grey, green and light grey or blue and light grey.



AVAILABLE WITH EASY SYSTEM FRAME ONLY

**A porch awning offering a totally unique style and all the hallmarks of Bradcot excellence.**



# Portico

20



People on the move rarely have the time to settle down and spread out. But here's an awning that's ideal for a night or two, to add vital, practically 'instant' add-on space to your caravan.



21

## Adds a bonus to any short stay.

The Portico, or more spacious Portico+ & Portico XL, makes your caravan doorway the threshold to a compact verandah, changing room or useful storeroom.



All versions have panoramic picture windows in the front panel, headed by a covered mesh ventilator. Large windows and doors are set to either side. Here's a room with a view that's designed with style to welcome the sun, add valuable extra space and pack away easily when it's time to go.

Fitting makes use of the awning channel across the top, with a pole and foam packer down each side; sensible, snug and protecting. In addition, the Portico XL can utilise the rail at one end of the caravan.

The Portico XL awning offers all the convenience and luxury of both Portico and Portico+ with yet more space. Portico XL really is a 'small Bradcot' awning with all its inherent features yet offering ease of storage, transportation and fast erection. The Portico XL also offers the added advantage of accepting a Bradcot Annexe or Annexe+. Once more emphasising Bradcot's commitment to improved choice and facility.

Which will be the model for you - the Portico, with a projection of 1.6m x 2.14m (5'3" x 7') and a rail length of 1.86m (6'1"), the Portico+, 1.93m x 2.6m (6'4" x 8'6") and a rail length of 2.26m (7'5") or the Portico XL, 2.4m x 3.42m (8' x 11'4") and a rail length of 2.86m (9'4"). All three are created with our strongest heat reflective roof material, and include acrylic side walls with 10 year 'Fade-Resist' guarantee.

Available in wine and light grey, green and light grey or blue and light grey.

**OPTIONS INCLUDE:** 'Easy-System' aluminium frame makes these lightweight awnings easier still to erect and dismantle. Before long you'll be timing yourself, down to 10 minutes. So convenient!

-   
Adjustable Pegging
-   
YKK Zips
-   
Easy System Option
-   
Heat Reflective Roof
-   
A British Concept & Design
-   
10 Year Anti-fade Guarantee

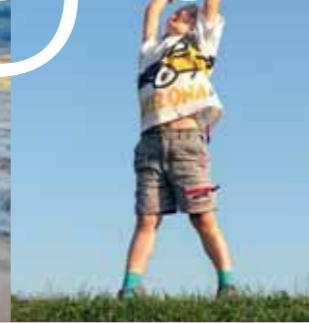


# Annexe

# Pergola



Add a Bradcot awning - any awning - and make it grow. The Annexe, the Annexe+ and now the Annexe 580+ simply zips into place to provide valuable extra living, sleeping or storage capacity.



Now make even more of your present Bradcot awning, or any awning in this brochure. Be assured, it will be a perfect partner, with splash walls colour coded to your awning and constructed in tough, breathable acrylic.

Although durable steel frames are provided as standard, you may prefer to specify the Aluminium Easy System, for virtually maintenance-free ease. The Annexe+, makes more of frame support and tensioning, with the benefit of extra height: a tall, handsome version which will take very little more setting-up time than the standard Annexe and includes a full ventilated window.

The detachable side panel, from awning to Annexe, can be either refitted for privacy, or removed to create an extended walk-through living area. A colour coordinated inner tent can also be added for a further touch of style.

The Bradcot Annexe 580+ (pictured on page 12) Features include:

- Projection of 1.5mtrs. Length 2.70mtrs.
- Fits Classic+ only.
- Has a large zipped removable end panel.
- End panel has a fully ventilated side mesh cathedral window for privacy.
- Offers a huge area for sleeping or storage.

### Privacy

The awning side window panel can be turned-around and re-zipped into the annexe entrance to create extra privacy or a tidy area to hide bikes and other caravanning equipment

### Annexe inner tent (optional)

## A high technology Caravanning-comfort solution offering weight saving versatility and practicality

Bradcot's all new Pergola Sun canopy range provides a modern high-quality alternative for Caravanning comfort.

Introduced last year, this sun canopy range offers many unique features to enhance performance and stability. The Pergola is manufactured from PVA coated spun polyester/pva mixture. An added bonus is that this fabric can be vigorously cleaned whenever required.

The Bradcot Pergola is made from a aluminiumised, heat-reflective material similar to that found on all of Bradcot's awnings. Bradcot's Easy System, upright poles and guy ropes are standard with these sun canopies with the option to upgrade to the full aluminum Easy System for added stability.

Unlike most sun canopies, Bradcot's Pergola design provides facility to encapsulate the poles within canvas, adding to the rigidity and appearance of the unit.

The Pergola range is available in all sizes, from 750 through to 1110. Simply a superb, quickly-erected shelter that offers new alternatives for today's discerning caravaneer.



**BRADCOT**  
AWNING RANGE

# Features

## So many extra benefits

### Easier

Easy Fix system bracket pads can be fixed to the secondary piping fitment



### Zip-fast

10mm zipper for all detachable panels and doors (interchangeable type in side), with Easy Slide zip fittings to all doorways. Zips are cambered at the corners for parallel tracking. Better fit! Easier to use!



### Comfort

Heat reflective roofs on all models keeps the heat out on even the hottest of days



### Stay Cool

Ventilator mesh in roof apex with zipped cover (see specification). **NEW** Ventilator mesh is now also fitted above the front windows.



### Home From Home

Curtain attachment is by simple telescopic aluminium rods. No nasty plastic fittings to assemble, just easy to use and a smart appearance.



24

25



**Veranda poles**  
(optional)

### All Bradcot awnings feature quality curtain fabrics and designs that are unique to Bradcot

These specially designed curtains appoint comfort and style to an already superb holiday environment. This attention to detail indicates how Bradcot strive to go that one step further in creating the very best in Caravan Awning technology

### Guaranteed

3 year guarantee against faulty materials and workmanship

### Protected

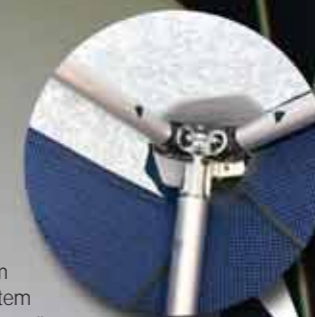
1 year accidental damage cover (see conditions)

### Colour Co-ordinated

Curtains...draught cloth...wheel arch covers - **ALL** colour co-ordinated. Wipe-clean PVC coated polyester splash walls and polyethylene mud walls colour matched for even greater style.

### Frame

Aluminium Easy System available on all awnings. Durable steel is also available as standard on all models (excluding Atrium). The telescopically adjustable poles will span up to 2.5 metre without intermediate support and - with many components interchangeable - you don't waste time searching for the next part you need.



### Lightweight Fibreglass

There's no need to sacrifice strength to achieve minimum weight. Available on Classic & Active models only

### Storm Straps

(Residencia only or as optional extra)



Unique moveable pegging system now on all awnings

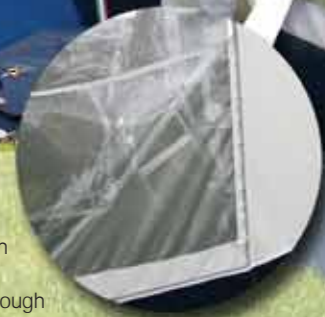


### Secure

Adjustable, canvas-to-frame tension system plus detachable, adjustable tension pegging system all round

### Stay Cool

Ventilator mesh window with zipped see-through cover



# Specification

26

27

STANDARD	CONCEPT	RESIDENCIA	CLASSIC+	CLASSIC	ACTIVE	SPORT	TRIUM 3.5	TRIUM 4.5	PORTICO XL	PORTICO+	PORTICO	ANNEXE 580	ANNEXE+	ANNEXE	PERGOLA
<b>ROOF</b>															
'Ten Cate' Coated Polyester (Printed)	-	✓	✓	✓	-	-	-	-	-	-	-	-	-	-	-
Heat Reflective	✓	✓	✓	✓	✓	✓	✓	✓	✓	✓	✓	✓	✓	✓	✓
'Ten Cate' Coated Polyester	✓	-	-	-	✓	✓	✓	✓	✓	✓	✓	✓	✓	✓	✓
<b>WALLS</b>															
Solution Dyed Acrylic	✓	-	✓	✓	✓	✓	✓	✓	✓	✓	✓	✓	✓	✓	-
Rip-Stop Coated Polyester/PVA	-	✓	-	-	-	-	-	-	-	-	-	-	-	-	-
<b>SIZE</b>															
Rail Length in cm*	780-1110	900-1110	840-1110	840-1110	780**-1050	780**-1050	4.1m	5.1m	2.86m (9ft 4in)	2.26m (7ft 5in)	1.86m (6ft 1in)	-	-	-	750-1110
Rail Height in cm*	-	-	-	-	-	-	-	-	230-250	230-250	230-250	-	-	-	-
Projection*	2.40+m (8ft)	2.40+m (8ft)	2.40+m (8ft)	3m (10ft)	2.40+m (8ft)	2.10+m (7ft)	2.40+m (8ft)	2.40+m (8ft)	2.40m (8ft)	1.93m (6ft 4in)	1.60m (5ft 3in)	1.50m (5ft)	1.50m (5ft)	1.50m (5ft)	2.30+m (7+ft)
Length (ground floor measurement)*	-	-	-	-	-	-	-	-	3.42m (11ft 4in)	2.60m (8ft 6in)	2.14m (7ft)	2.70m (9ft)	2.10+m (7ft)	2.10+m (7ft)	-
<b>FEATURES</b>															
Zips	YKK	YKK	YKK	YKK	YKK	YKK	YKK	YKK	YKK	YKK	YKK	YKK	YKK	YKK	-
Front doors	2	2	2	2	2	2	-	-	2	-	-	2	-	-	-
Side doors	4	4	4	4	4	1	2	2	4	2	2	-	-	-	-
Side ventilator with zipped cover	1	2	2	2	1	-	2	2	1	-	-	1	1	-	-
Detachable front panels	2	2	2	2	2	2	3	3	1	1	1	1	-	-	-
Detachable side panels	2	2	2	2	2	1	2	2	2	-	-	-	-	-	-
Fully Retractable Side Panel	-	-	-	-	-	-	-	-	-	2	2	-	-	-	-
Verandah effect, Front***	✓	✓	✓	✓	✓	✓	✓	✓	✓	✓	✓	✓	-	-	-
Verandah effect, Side***	✓	✓	✓	✓	✓	✓	✓	✓	✓	-	-	-	-	-	-
Front vent & zipper	✓	✓	✓	✓	✓	-	-	-	✓	-	-	-	-	-	-
Front vent above window	✓	✓	✓	✓	✓	✓	✓	-	-	✓	✓	-	-	✓	-
Coated Polyester Splashwalls	✓	✓	✓	✓	✓	✓	✓	✓	✓	✓	✓	✓	✓	✓	-
Coated Polyethylene Mudwalls	✓	✓	✓	✓	✓	✓	✓	✓	✓	✓	✓	✓	✓	✓	-
Draught cloth & Wheel arch cover	✓	✓	✓	✓	✓	✓	✓	✓	✓	✓	✓	-	-	-	-
Easy-Fit Curtains with rods	✓	✓	✓	✓	✓	✓	✓	✓	✓	✓	✓	-	-	-	-
Easy-Fix bracket pads	✓	✓	✓	✓	✓	✓	✓	✓	✓	✓	✓	-	-	-	✓
Adjustable/Detachable pegging	✓	✓	✓	✓	✓	✓	✓	✓	✓	✓	✓	✓	✓	✓	✓
Moveable/Adjustable/Detachable pegging	✓	✓	✓	✓	✓	✓	✓	✓	✓	✓	✓	✓	✓	✓	-
Plated Steel Frame	✓	✓	✓	✓	✓	✓	✓	✓	✓	✓	✓	✓	✓	✓	-
<b>WARRANTY</b>															
1 Year Manufacturer's	-	✓	-	-	-	-	-	-	-	-	-	-	-	-	-
3 Year Manufacturer's	✓	-	✓	✓	✓	✓	✓	✓	✓	✓	✓	✓	✓	✓	✓
1 Year Accidental Damage (Conditional)	✓	✓	✓	✓	✓	✓	✓	✓	✓	✓	✓	✓	✓	✓	✓
10 Year 'Fade-Resist' (Walls only)	✓	-	✓	✓	✓	✓	✓	✓	✓	✓	✓	✓	✓	✓	-
<b>OPTIONAL</b>															
Annexe/Annexe+ (both sides)	✓	✓	-	✓	✓	-	-	-	✓	-	-	-	-	-	-
Annexe (one side)	-	-	✓	-	-	-	-	✓	-	-	-	-	-	-	-
Verandah effect pole	✓	✓	✓	✓	✓	✓	✓	✓	✓	✓	✓	-	-	-	-
'Easy System' Aluminium frame	✓	****	✓	✓	✓	✓	✓	-	✓	✓	✓	✓	✓	✓	✓
Glass Fibre frame	✓	-	✓	✓	✓	✓	-	-	-	-	-	-	-	✓	-
Patio Conversion	-	-	✓	✓	✓	-	-	✓	✓	-	-	-	-	-	-